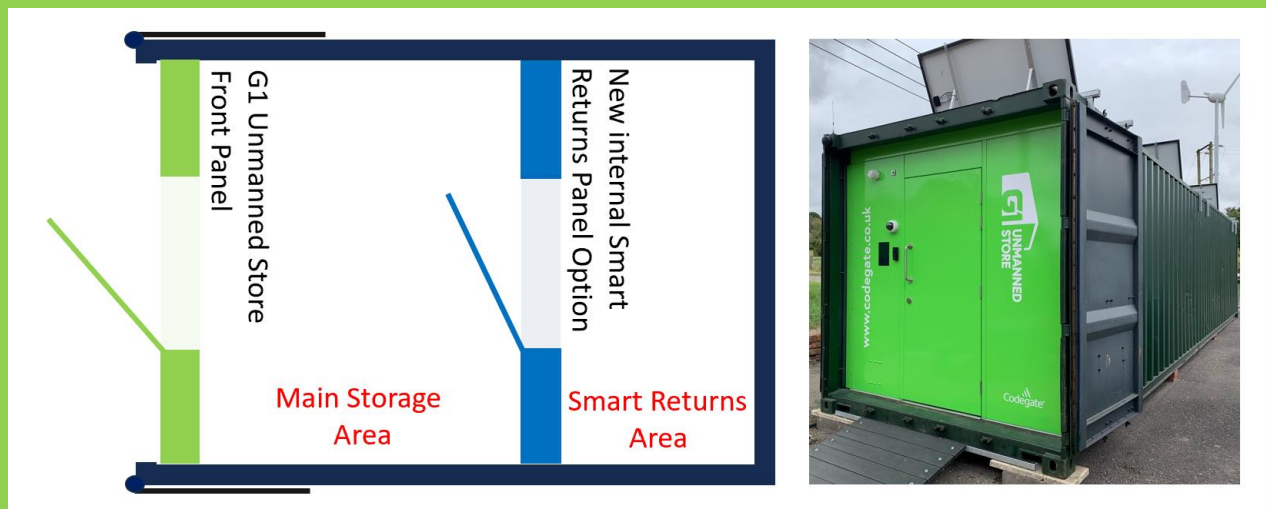


## Smart Returns Area

Ideal for applications where tools that are damaged or in need of inspection / calibration can be returned to a segregated quarantine area with notifications automatically sent to the Store Manager.



The Smart Returns panel is a low-cost variation of the G1 Unmanned Store smart panel. It can be installed inside any standard shipping container, with the distance to the back wall entirely determined by user preference. It is easy to retrofit into an existing store.

Once installed, the store manager will be able to view the details of any hire items returned to the store and will be able to schedule a routine visit to collect and replenish with fresh stock. Since every hire item is uniquely identified their complete history will be recorded over time. Items reported as damaged or overdue for inspection are automatically flagged in red.

Store Hire	Product Type	Status	Search	Product Type	Product Code	Description	Reference	Check Date	Damaged	Qty	Status
1234	Hireable	- Show All -	milwaukee	Hireable	D0943752WCE30	Milwaukee WCE30 heavy duty channel cutter		15 Aug 2023			Smart Returns Area
				Hireable	DO9001205JSPE	Milwaukee JSPE135 TX heavy duty jig saw		26 May 2023	Yes		Smart Returns Area Damaged Cupboard

### Codegate - Old Barn Store 1234

Damaged Item Moved  
Milwaukee JSPE135 TX heavy duty jig saw  
[Visit 11115](#)  
23/11/2023 08:28:38

The Store Manager can receive an alert as soon as any item is placed in the smart returns area enabling remedial action to be taken immediately if necessary.

The G1 Unmanned Store delivers all this functionality automatically, without the store users having to manually report anything.