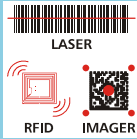




## Rugged Hand-Held Mobile Computer

**DATALOGIC**  
Your Life. Our Enthusiasm™



Mobile Computers

## General Description

The Datalogic Kyman-NET™ rugged mobile computer is the new key element of Datalogic's mobile@work™ product family for field force automation and logistics solutions.

Kyman-NET™, thanks to the lightest weight of its category combined with one of the best ergonomics ever seen on the market, reduces operator fatigue with no compromise in terms of reliability and robustness.

Its sturdy outer casing with overmold protection has been designed to resist harsh environments, multiple drops, strong shocks, repetitive tumbles as well as sub-zero temperatures.

Datalogic's Kyman-NET™ key features include fully integrated automatic data capture (1D bar code, 1D bar code & RFID HF-ISO tags, 1D & 2D bar codes & images), allowing codes to be read from near contact to several meters distance and simultaneous wireless communication capabilities (Bluetooth®, Wi-Fi, GSM/GPRS).

Kyman-NET™ system architecture is based on the "de-facto standard" combination of Intel X-Scale series processors coupled with the Windows CE operating system and is ready to satisfy the most demanding customer needs (i.e. expandable memory thanks to a Secure Digital standard slot).

Kyman-NET™ provides 2 intuitive numeric/alphanumeric keyboard layouts with backlight, able to fulfil 100% of traditional text based applications (i.e. terminal emulation, through the DL-TCL-NET™ software client) as well as the most modern Web-based solutions (i.e. exploiting Microsoft Internet Explorer through the DL-Locked-Web-Browser application).

Kyman-NET™ provides mobile professionals with the most relevant features needed to operate in demanding environments: reliability, ruggedness, drop resistance, long lasting batteries, flexible communication and efficient data capture.

## Features

- > Lightweight, ergonomic and robust
- > 1.5 m drop resistance; IP64 protection class
- > Microsoft Windows CE 4.2 .Net Operating System
- > Laser, Imager and RFID data capture options
- > Bluetooth®, Wi-Fi, and GSM/GPRS simultaneous communication options
- > Large high visibility color graphic display with touch screen
- > Numeric/alphanumeric keyboards available

## Applications

- > Field service automation
- > Meter reading
- > Route accounting
- > Parcel pick-up and delivery
- > Proof of delivery
- > Warehouse management: inventory/picking/shipping/receiving
- > Shelf replenishment/Price management



## Specifications

### PHYSICAL CHARACTERISTICS

DIMENSIONS	240 mm x 92 x 55 mm / 9.4 x 3.6 x 2.2 in.
WEIGHT	540 - 570 g / 19.0 - 20.1 oz (incl. battery)
DISPLAY	Reflective TFT daylight readable color display, 240 x 320 pixels, 3.5 in. (89 mm) diagonal, 64 K colors, backlight, touch screen
KEYBOARD	53 or 36 plastic top backlit keys
OPERATING TEMPERATURE	-20 °C (4 °F) to +50 °C (122 °F)
STORAGE TEMPERATURE	-20 °C (-4 °F) to +70 °C (158 °F)
DROP RESISTANCE	Withstands drops from 1.5 meters (5 ft) onto concrete
ENVIRONMENTAL SEALING	IP64 standard for water and dust resistance

### PERFORMANCE

OPERATING SYSTEM	Windows CE 4.2 .Net
MICROPROCESSOR	Intel® XScale @ 400 MHz
SYSTEM RAM MEMORY	64 MB/128 MB
SYSTEM FLASH MEMORY	64 MB (including Backup directory for user data & program permanent storage)
EXPANSION SLOTS	Secure Digital and Compact Flash slots

### SERIAL COMMUNICATION

INTERFACES	Electrical: integrated 3-pin RS232 up to 115.2 Kbps USB: integrated high speed USB (USB 1.1)
------------	---

### WIRELESS DATA COMMUNICATION

LOCAL AREA NETWORK	IEEE 802.11b (Wi-Fi) Antenna: Internal Frequency range: Country dependent, typically 2.4 - 2.5 GHz
WIDE AREA NETWORK	GSM/GPRS (900/1800/1900 MHz); user-accessible SIM socket for GSM/GPRS Antenna: Internal
PERSONAL AREA NETWORK	Bluetooth® IEEE 802.15 Antenna: Internal

### POWER MANAGEMENT

POWER SUPPLY	Removable battery pack with rechargeable Li-Ion batteries; 7.4 V 2200 mAh (16.3 Watt-hours); Local connection for fast battery charging
--------------	---

### LASER CHARACTERISTICS (XXX-1XX MODELS)

SCAN RATE	35 ±5 scans/sec
MINIMUM RESOLUTION	0.127 mm (5 mils)
DEPTH OF FIELD	3 to 70 cm (1.2 to 27.6 in), depending on bar code density
BAR CODES	EAN/UPC, Code 39, 2/5 Codes, Plessey, Codabar, Code 128, EAN128, MSI, Code 93, Code 11
LASER CLASSIFICATION	VLD - Class II EN 60825-1/CDHR

### LASER CHARACTERISTICS (XXX-4XX MODELS)

SCAN RATE	50 ±6 scans/sec
MINIMUM RESOLUTION	0.127 mm (5 mils)
DEPTH OF FIELD	5 to 55 cm (2.3 to 21.3 in), depending on bar code density
BAR CODES	EAN/UPC, Code 39, 2/5 Codes, Plessey, Codabar, Code 128, EAN128, MSI, Code 93, Code 11

### LASER CHARACTERISTICS (XXX-6XX MODELS)

SCAN RATE	40 ±6 scans/sec
MINIMUM RESOLUTION	0.20 mm (7.5 mils)
DEPTH OF FIELD	15 to 380 cm (5.9 to 149.6 in), depending on bar code density
BAR CODES	EAN/UPC, Code 39, Int. 2/5 Codes, Codabar, Code 128, EAN128, MSI, Code 93, Code 32, Discrete 2 of 5, RSS

### RFID CHARACTERISTICS (XXX-X2X MODELS)

OPERATING FREQUENCY	13.56 MHz
RFID TAGS	EMS HMS Series, EMS LRP ISO15693 Series, Philips Mifare Classic 1k (read/write block only), Philips Mifare Classic 4k (read/write block only), Philips Mifare Ultralight, Philips I-Code SLI ISO15693, Texas Tag-It HF-I ISO15693, Infineon ISO15693
OPERATING RANGE	Up to 10 cm

### IMAGER CHARACTERISTICS (XXX-7XX MODELS)

AIMING	Visible laser diode @ 650 nm
MAX. RESOLUTION	Linear: 5 mils; Datamatrix: 6.6 mils
READING FIELD	21.8° (H) x 16.7° (V)
PRINT CONTRAST VALUE	PCS=23% (min.)
READING ANGLE	Skew ±40°; Pitch ±35°; Tilt 360°
SENSOR	640 X 480 element, 2D CMOS array
LASER CLASSIFICATION	Class 2 (IEC 825-1 and CDRH)
BAR CODES	1D: Interleaved 2 of 5, Code 39, Code 128, EAN 128, Code 93, UPC/EAN/JAN, Codabar, RSS 2D: PDF417, DataMatrix, QR POSTAL CODES: POSTNET, PLANET, Japan Post, Australia Post, KIX Code, Royal Mail Code (RM4SCC)
IMAGE & SIGNATURE CAPTURE	640 x 480 VGA (8 bit gray scale); 320 x 240 CIF (8 bit gray scale)

## Accessories



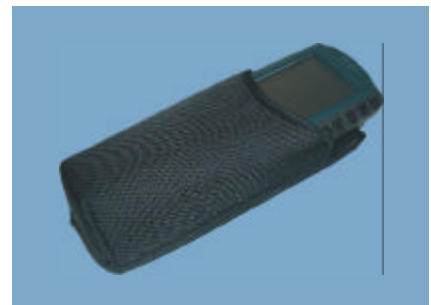
Single Cradle



Multiple Battery Charger



Functional Case



Belt Holster

